

MONTHLY MEMBERSHIP PROGRESS REPORT

District 26 M2

Results as of: 2/29/2024

GMT:

LOCATION MISSOURI

GMT CA

Clubs			
RESULTS FOR 2023-2024			
QUARTER	NEW CLUB GOAL	NEW CLUBS	DROPPED CLUBS
JULY/AUG/SEPT	0	0	0
OCT/NOV/DEC	1	0	0
JAN/FEB/MAR	0	0	0
APR/MAY/JUNE	0	0	0

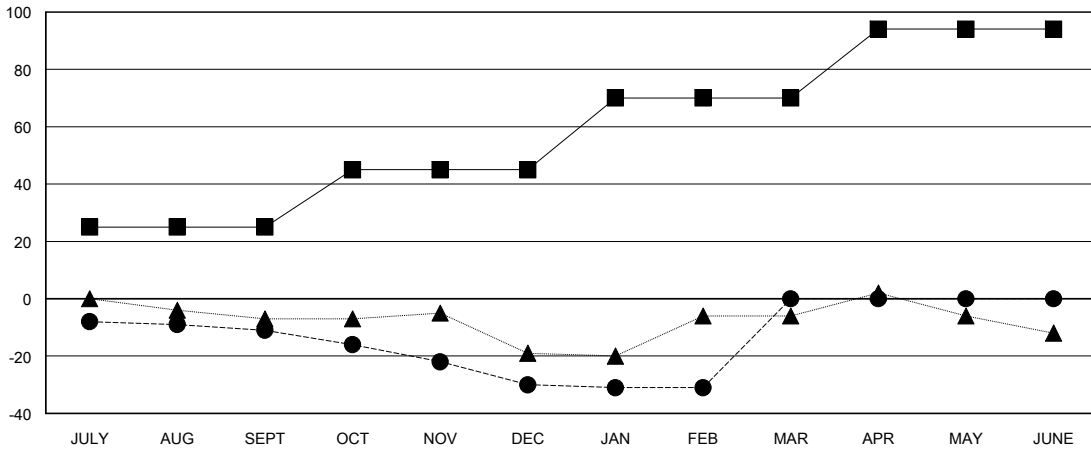
Members			
RESULTS FOR 2023-2024			
QUARTER	MEMBER GROWTH NET GOAL	MEMBER GROWTH ACTUAL	DROPPED MEMBERS ACTUAL (including transfers)
JULY/AUG/SEPT	25	19	23
OCT/NOV/DEC	20	15	29
JAN/FEB/MAR	25	6	7
APR/MAY/JUNE	24	0	0

GOALS AND ACTUAL NEW CLUBS CUMULATIVE



- - CURRENT YEAR GOALS FOR NEW CLUBS
- - CURRENT YEAR ACTUAL NEW CLUBS
- ▲ - LAST YEAR ACTUAL NEW CLUBS

GOALS AND ACTUAL MEMBERS CUMULATIVE



- - MEMBER GROWTH NET GOAL
- - MEMBER GROWTH ACTUAL
- ▲ - LAST YEAR MEMBERSHIP ACTUAL

DROPPED CLUBS: 0	13 CLUBS OF 37 ADDED 1 OR MORE NEW MEMBERS	GENDER DISTRIBUTION
		MALE 799 (71.34%)
		FEMALE 321 (28.66%)
DROPPED MEMBERS	CLICK HERE FOR CUMULATIVE MEMBERSHIP DATA	TOTAL FAMILY UNIT MEMBERS 238
DECEASED 14		FAMILY MEMBERS PAYING HALF DUES 125
CLUB CANCELLED 0		
OTHER 45		
TOTAL 59		